

### Features

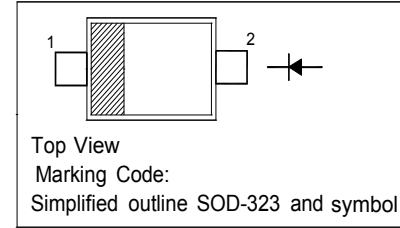
- Halogen free available upon request by adding suffix "-HF"
- Guard Ring Protection
- Low Forward Voltage Drop
- For Use in Low Voltage, High Frequency Inverters
- High Surge Current Capability

### Maximum Ratings

- Operating Temperature: -65°C to +125°C

### PINNING

PIN	DESCRIPTION
1	Cathode
2	Anode



### Absolute Maximum Ratings (T<sub>a</sub> = 25 °C)

Parameter	Symbol	Value	Unit
Peak Repetitive Reverse Voltage	V <sub>RRM</sub>	60	V
Maximum RMS Voltage	V <sub>RMS</sub>	42	V
Maximum DC Blocking Voltage	V <sub>DC</sub>	60	V
Average forward current	I <sub>F(AV)</sub>	1	A
Peak Forward Surge Current	I <sub>FSM</sub>	10	A
Junction Temperature	T <sub>J</sub>	-65 ~ +125	°C
Storage Temperature Range	T <sub>stg</sub>	-65 ~ +150	°C

### Characteristics at T<sub>a</sub> = 25 °C

Parameter	Symbol	Max.	Unit
Average Forward Current T <sub>C</sub> = 90°C	I <sub>F(AV)</sub>	1.0	A
Peak Forward Surge Current 8.3ms, half sine	I <sub>FSM</sub>	10	A
Maximum Instantaneous Forward Voltage I <sub>FM</sub> = 1A; T <sub>J</sub> = 25°C (Note 1)	V <sub>F</sub>	0.70	V
Maximum DC Reverse Current At Rated DC Blocking Voltage T <sub>A</sub> = 25°C	I <sub>R</sub>	0.1	mA
Typical junction capacitance Measured at 1.0MHz, V <sub>R</sub> = 4.0V	C <sub>J</sub>	120	PF

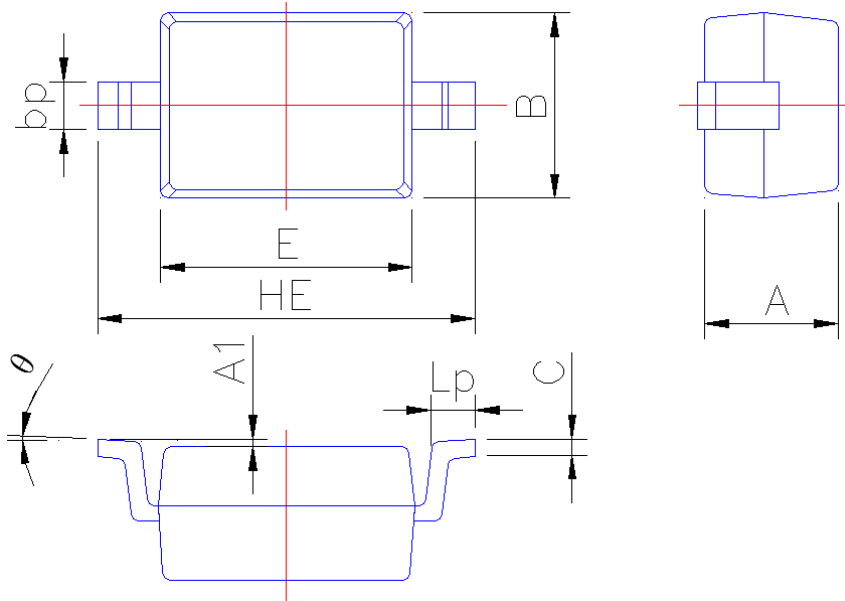
Notes: 1. Pulse Test: Pulse Width 300usec, Duty Cycle 2%



## PACKAGE OUTLINE

Plastic surface mounted package; 2 leads

SOD-323



Symbol	Dimension in Millimeters	
	Min	Max
A	0.95	1.15
A1	0.010	0.100
B	1.20	1.40
bp	0.25	0.40
C	0.09	0.150
E	1.60	1.80
HE	2.30	2.70
Lp	0.20	0.40
θ	0°	5°